

# Nemours CHERISH Program

---

**Communities Harnessing Education, Resilience  
and Integrated Services for Health**

---

Presented by  
Kelly Rogers MPH and Lisa Spector MD

Nemours Healthy Kids Healthy Future  
Technical Assistance Program Virtual State Partner Forum  
Friday, October 23, 2020

# SOCIAL DETERMINANTS OF HEALTH



# Social Determinants of Health SDOH

---

- What do you think of when you hear these words?

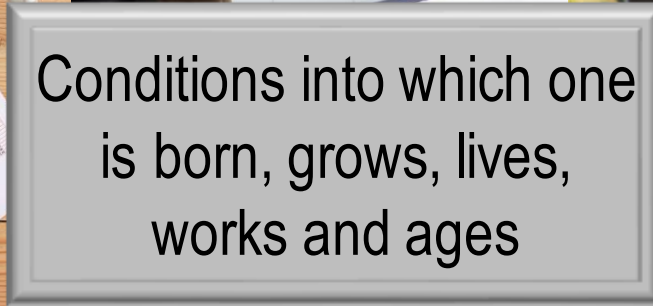
Health and Health Care



Social and Community Context



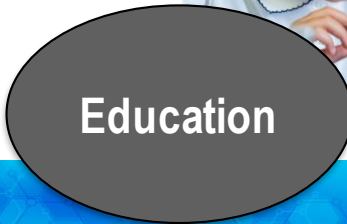
Conditions into which one is born, grows, lives, works and ages



Economic Stability



Education



Neighborhood and Built Environment



# Health and Health Care

HEALTH LITERACY

HEALTH INSURANCE

ACCESS TO  
HEALTHCARE

ACCESS TO  
TRANSPORTATION

Understanding child development and how to building skills (serve & return, reading, floor time with toys, emotion regulation)

Navigating complex medical system

Difficulty detecting and managing chronic conditions

Understanding medical advice and prescriptions

Limited transportation and clinic hours overlap with work hours



# Neighborhood and Built Environment

**HOUSING**

**AIR/WATER QUALITY**

**HEALTHY FOODS**

**TRANSPORTATION**

**SAFETY**

**PARKS/PLAYSPACES**

**Live near pollutants and have infestations**

**Food deserts & poor transportation, high cost of fruit/veggie - impact Obesity, CVD, Hypertension**

**High crime rates, housing in disrepair, limited services, poor infrastructure lead to ACES → stress and weakened immune function and illness & impact development and behavior**

**Unsafe neighborhoods and lack of green space result in less outdoor physical activities**

# Education

LANGUAGE

LITERACY

EARLY CHILDHOOD  
EDUCATION

HIGH SCHOOL  
GRADUATION

ENROLLMENT IN  
HIGHER EDUCATION

Low parental education attainment - lack parenting knowledge, isolated with few supports, difficulty obtaining high-quality early childhood education/care, - risk for Child Maltreatment

In Florida, 49% of 3-4 yr olds are not in PreK thus start Kindergarten 18 mo behind peers

OC only 58% read at grade 3 in ELA  
→ lower literacy and higher drop out rate

No Child Left Behind – over emphasis on academic skills/testing not developmentally appropriate and lack social skill building

# Economic Stability

**EMPLOYMENT**

**POVERTY**

**FOOD SECURITY**

**HOUSING STABILITY**

**22% of children < 18 live in poverty (2017) in OC, FL**

**Work multiple jobs & over stressed due to lack of resources leads to overreliance on screens to educate/babysit children → deficit in social-emotional skills and obesity, increase in anxiety and depression**

**Unemployment is associated with depression, intimate partner violence, substance abuse and physical illness**

**School closures exacerbate food insecurity and malnutrition increase risk for poor health**



# Social and Community Context

**DISCRIMINATION**

**SOCIAL COHESION**

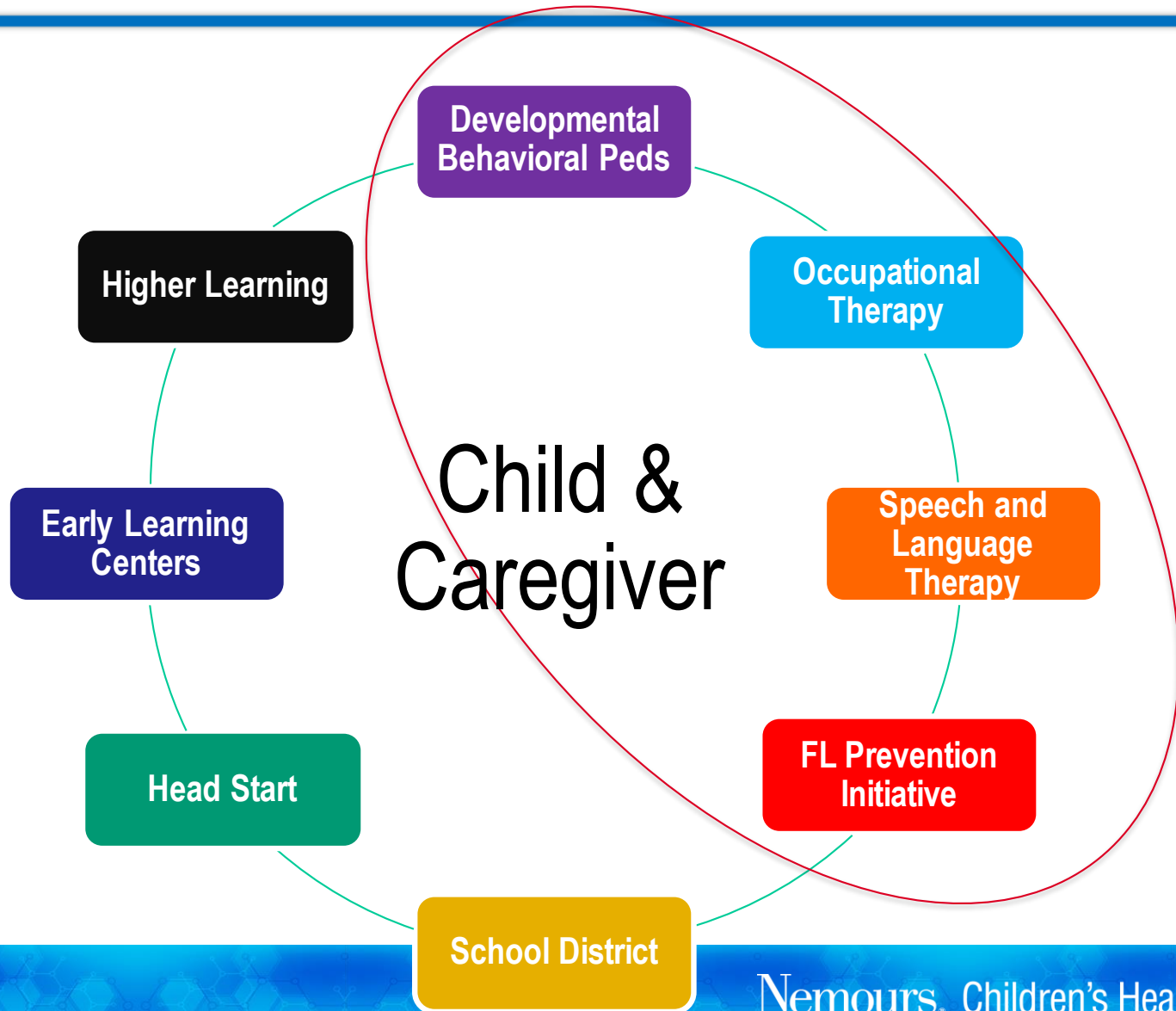
**COMMUNITY  
ENGAGEMENT**

**Social connection significantly reduces premature mortality from all causes – independent of age and initial health status**

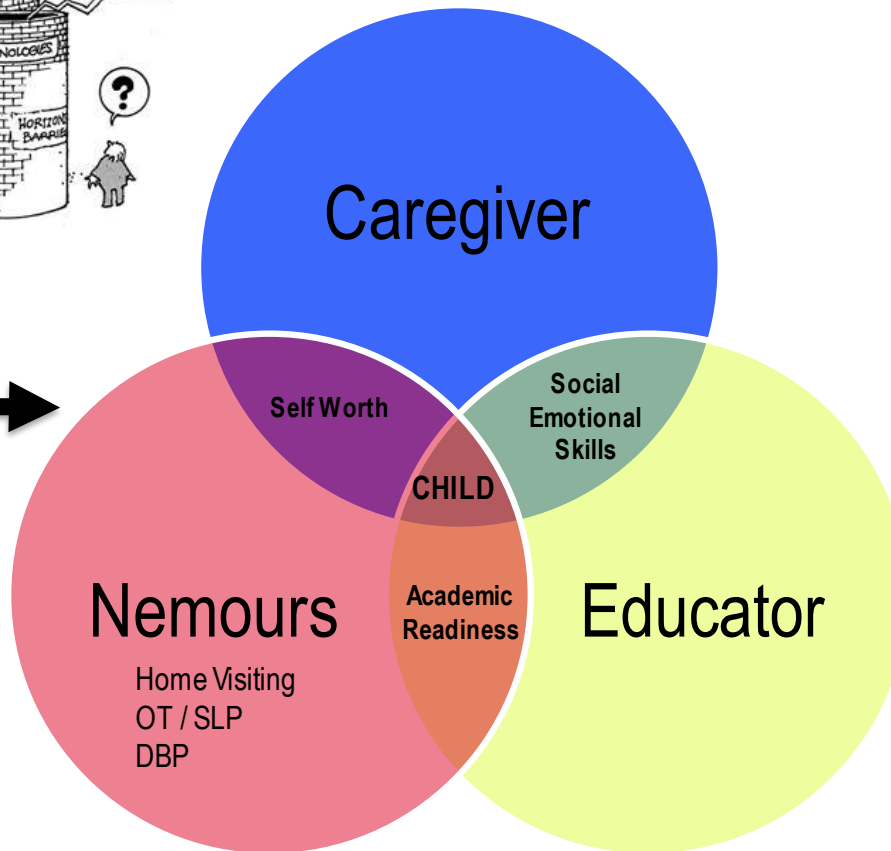
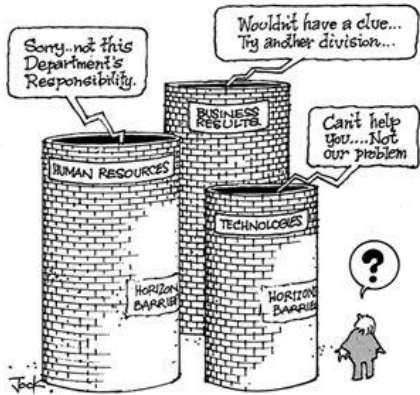
**Poor social connection increase risk of heart disease (29%), stroke (32%), depression, drug/alcohol related deaths and suicide**



# Nemours Expertise, Community & Collaboration



# Early Intervention Approaches



## Mental / Behavioral Wellbeing

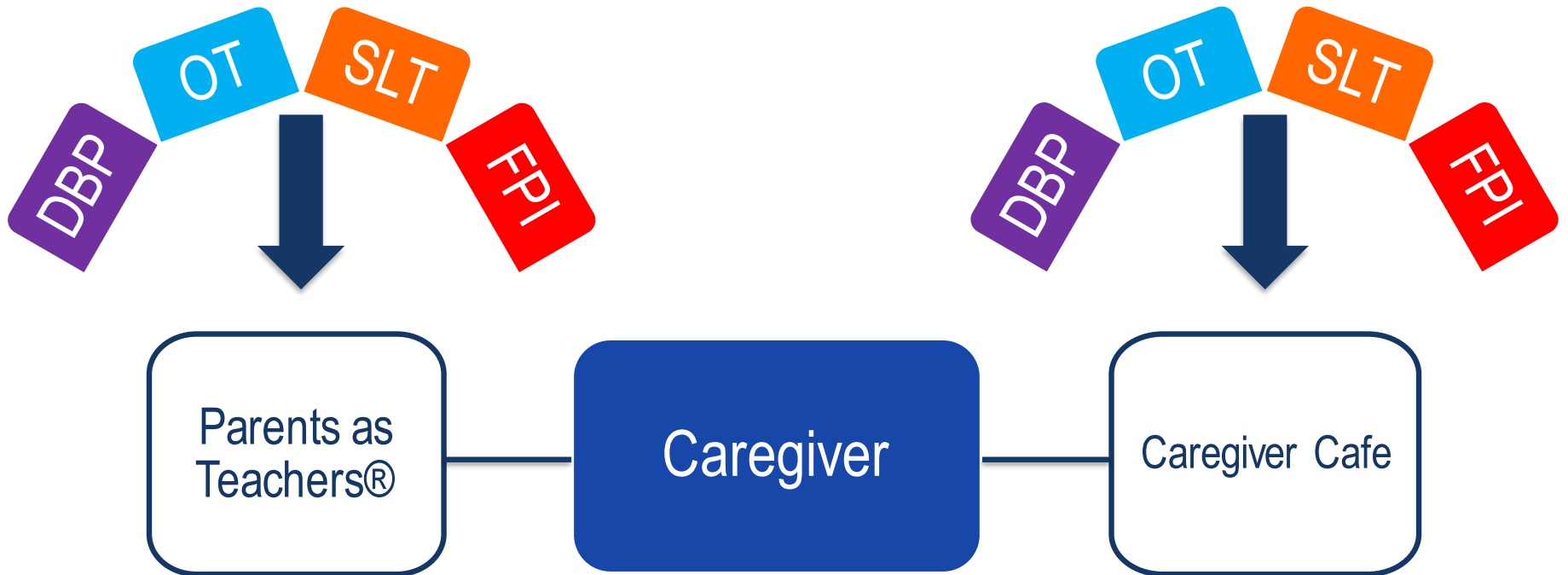
- Support caregivers through personal visits & parenting education groups
- Educate caregivers and teachers on ACEs to build resilient children and families and improve health
- Build Social-Emotional skills to improve ability to learn

## Academic Preparedness

- Address the gap in reading, writing and communication readiness through therapy services (OT/SLP)
- Equip caregivers and teachers to promote healthy development of child (language, fine motor skills and sensory processing difficulties)

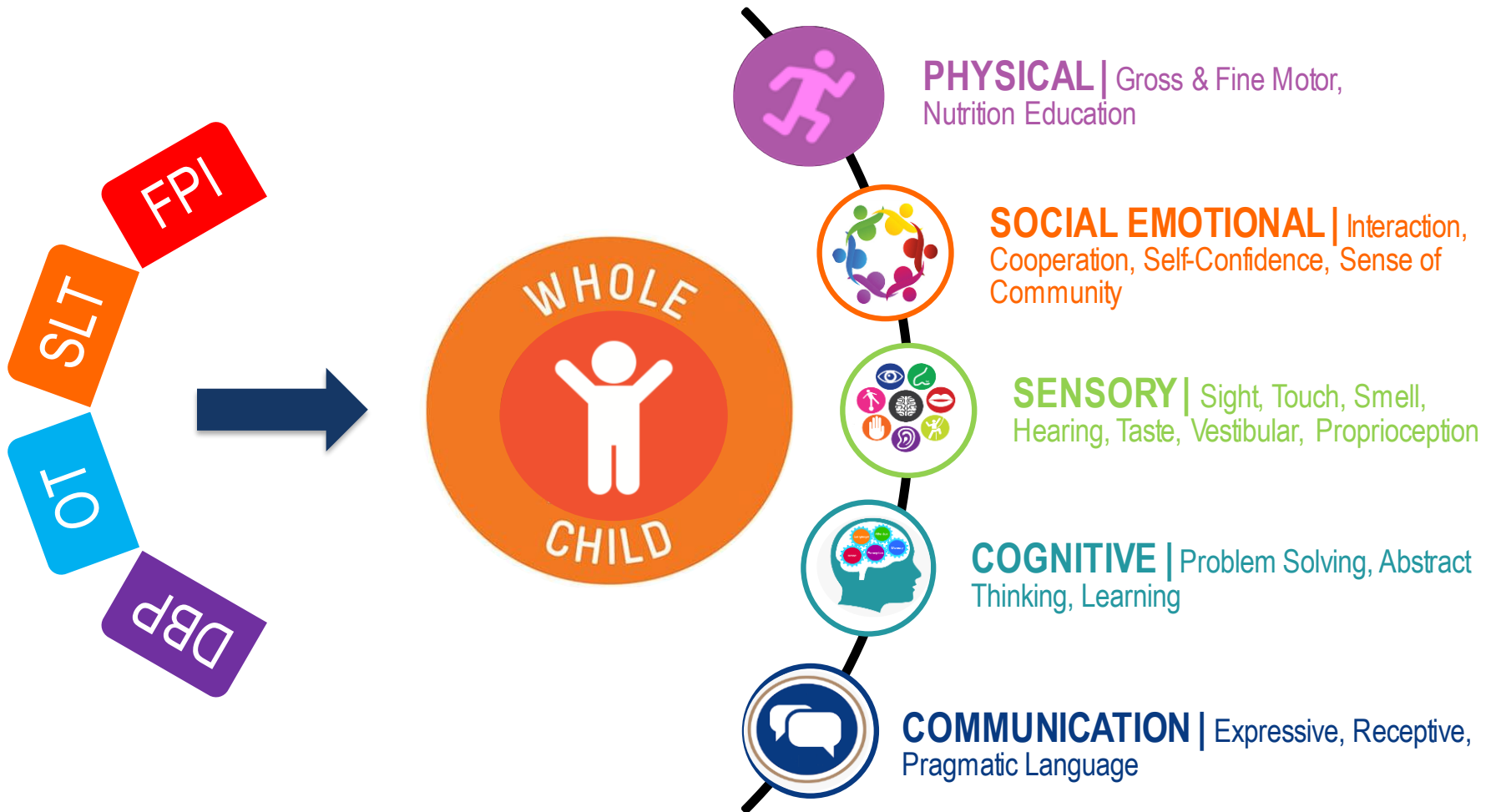
# Nemours CHERISH | Caregiver Support

---





# NOT your average Home Visiting Program



# NOT your average Home Visiting Program

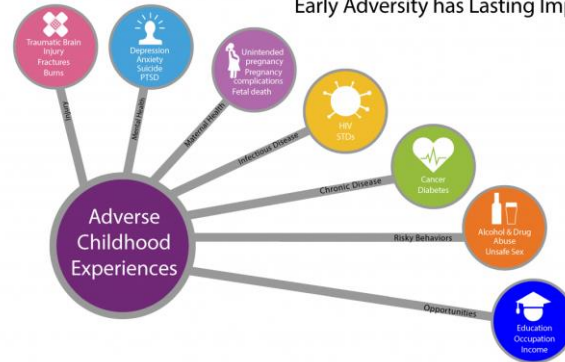
Parent Training  
for Disruptive  
Behaviors



**PCIT**

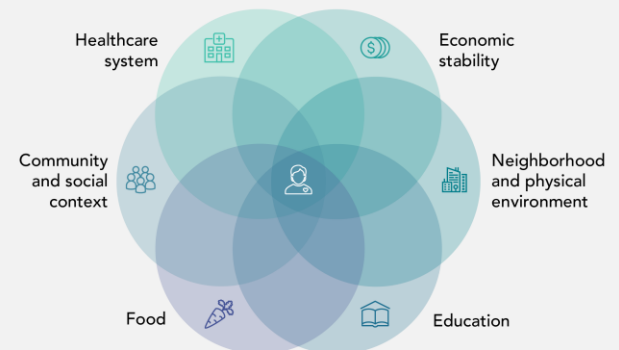
Parent-Child Interaction Therapy  
Integrity Checklists and Session Materials

Early Adversity has Lasting Impacts



THE  
**ZONES** OF  
REGULATION™

**SOCIAL DETERMINANTS OF HEALTH**



# NOT your average Home Visiting Program

---



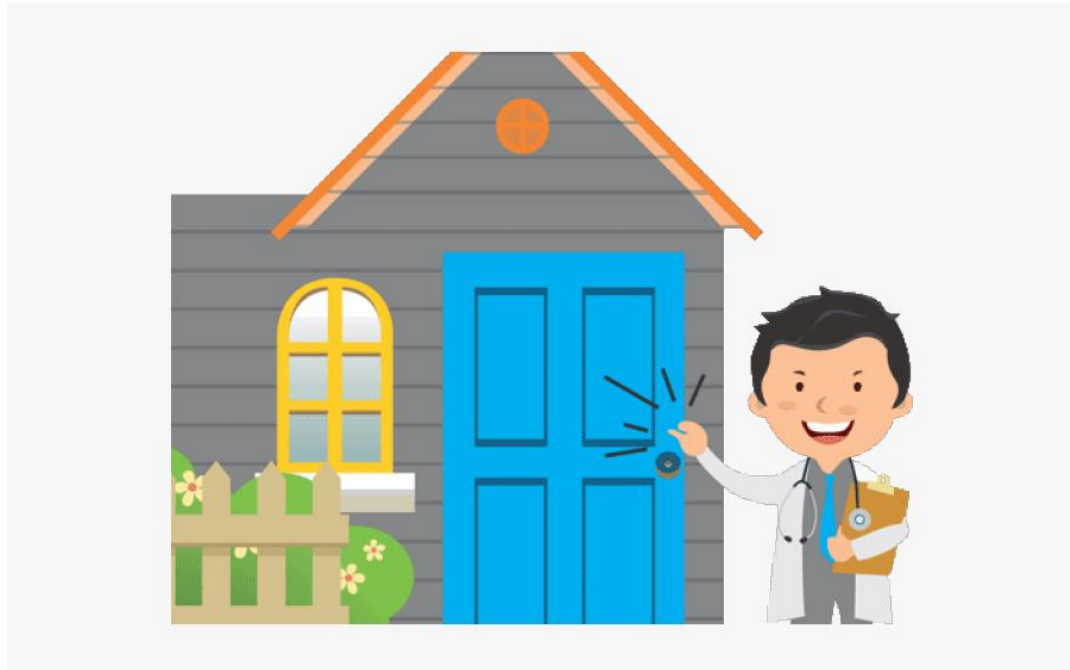
# NOT your average Home Visiting Program

---



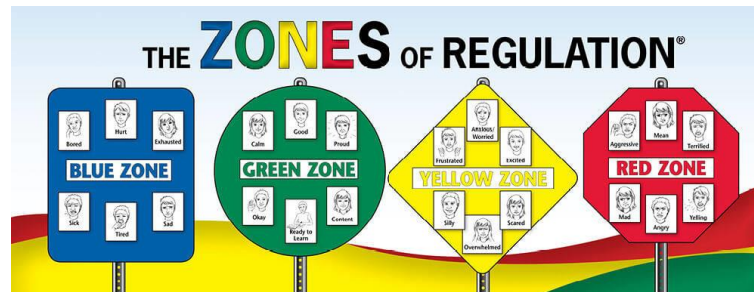
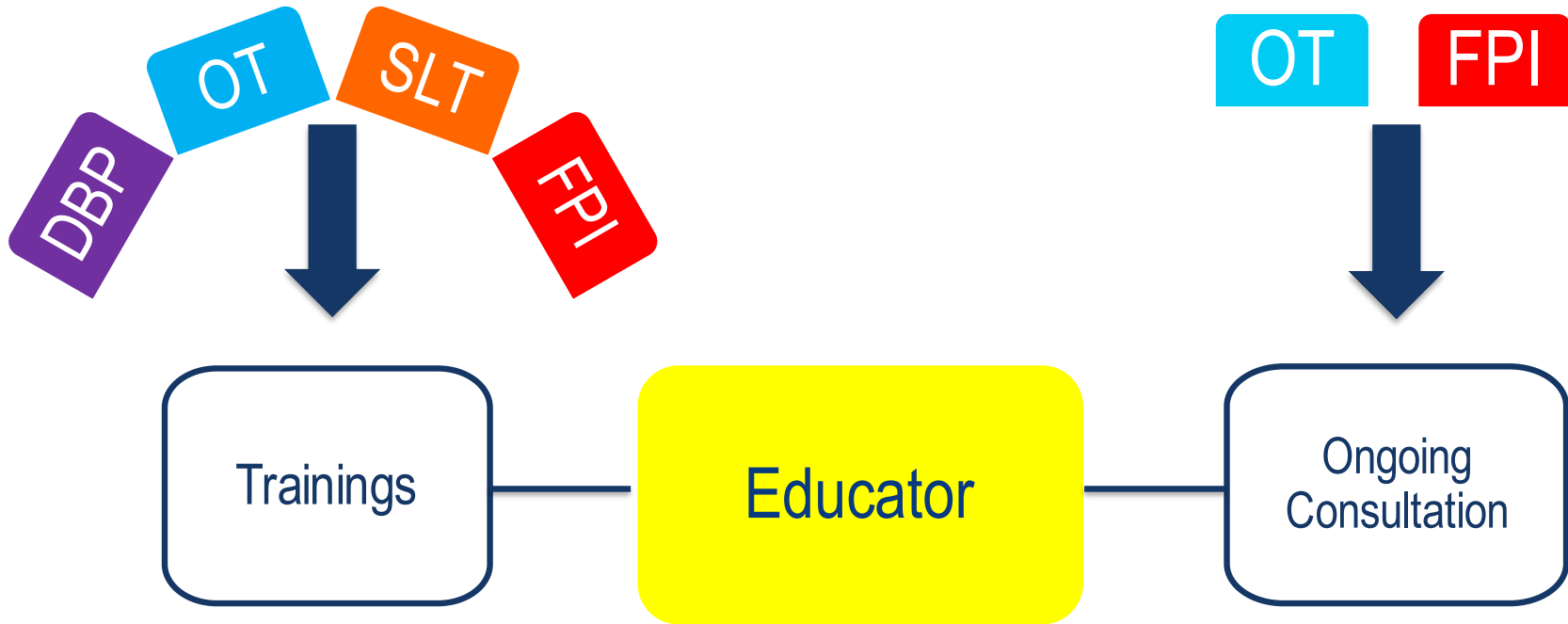
# NOT your average Home Visiting Program

---

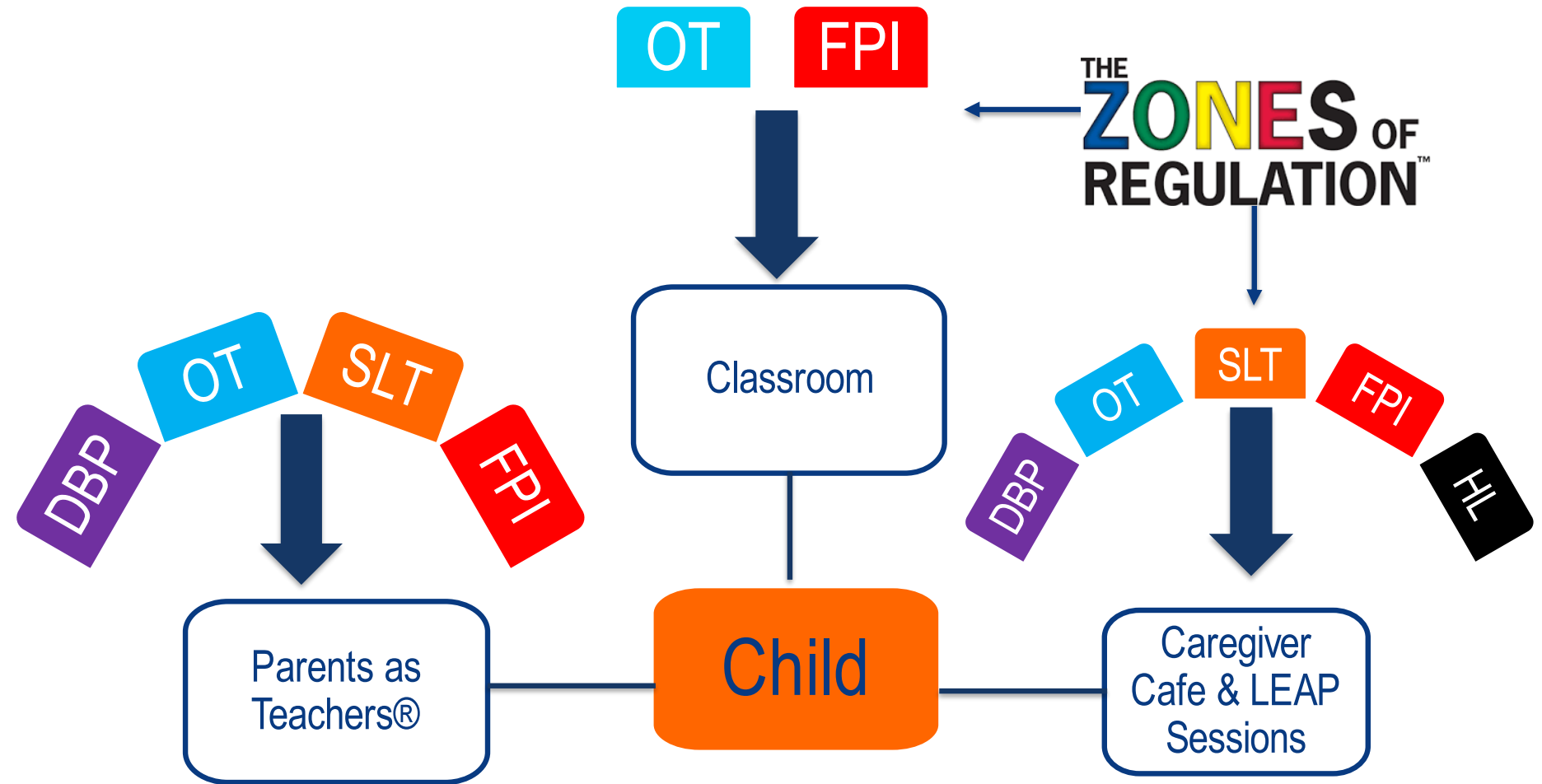




# Nemours CHERISH | Educator Support



# Nemours CHERISH | Children's Support



# Anticipated Outcomes

---

## Child

- Improve social emotional skills
- Increase academic readiness – speech, language, sensory and fine motor skills

## Caregiver

- Increase in use of positive parenting – reduced use of negative parenting strategies, and thus child physical abuse
- Increase self-efficacy in managing deviant behaviors
- Improved understanding of child development, attachment, impact of adversity, safe sleep, screen time limits, healthy eating, immunizations

## Educator

- Improved understanding of the impact of adversity on the child, and their behaviors
- Increase in self efficacy in effectively managing aberrant behaviors in the classroom
- Increased use of social-emotional skill building in classroom
- Increased self-efficacy and use of effective strategies to build language skills, improve child compliance and aid children who struggle with sensory difficulties.

# Questions?